



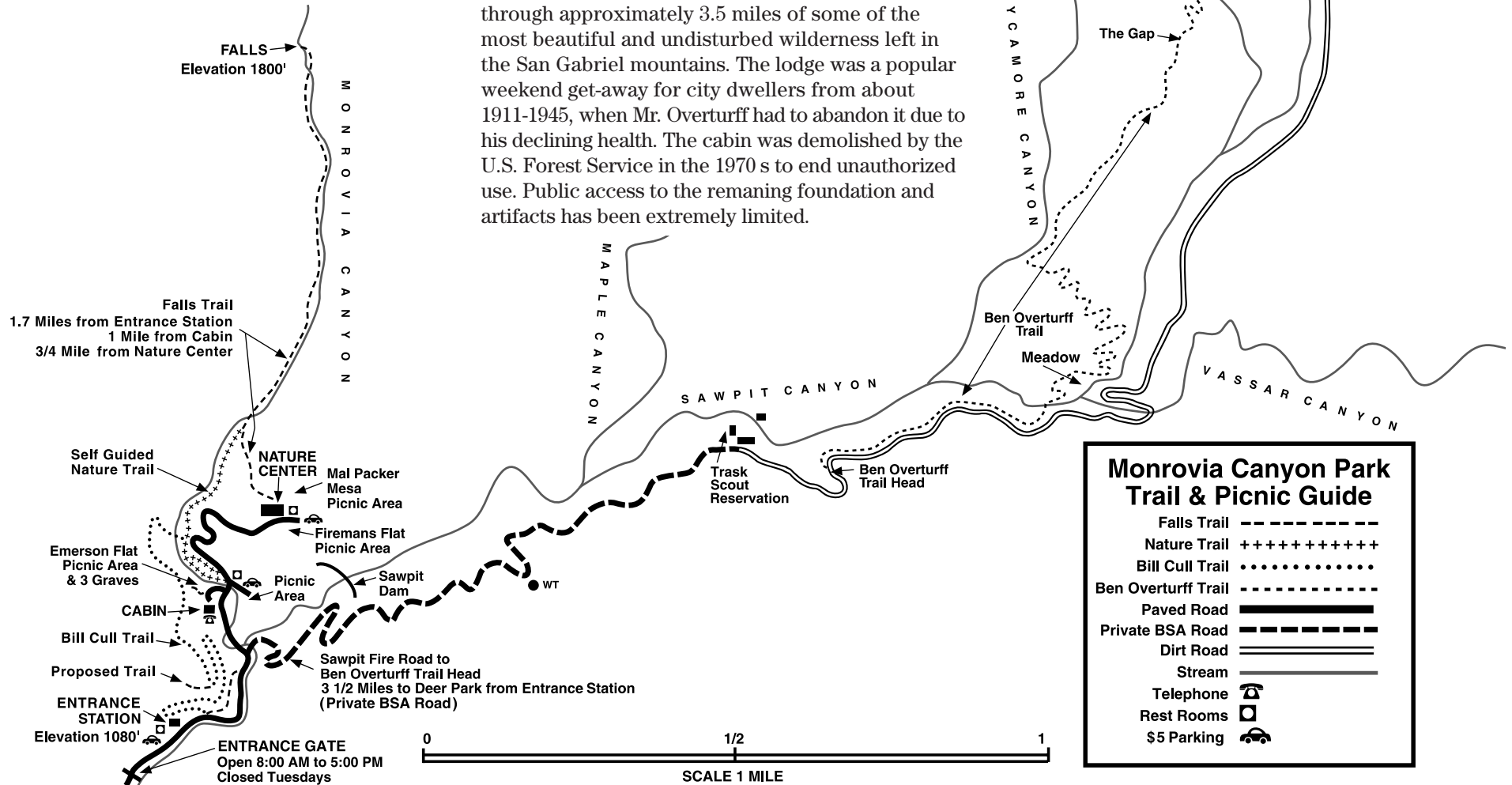
## Waterfall Trail

This is an **easy hike** and **is perfect for the whole family**. Three different trail heads allow you to select the distance you wish to hike. Starting at the Bill Cull trailhead by the entrance station, the hike is 1.7 miles one-way. Starting at the middle parking lot makes the hike 1 mile, one-way. The trailhead behind the Nature Center makes it an easy 3/4 of a mile hike to the Falls, one-way.

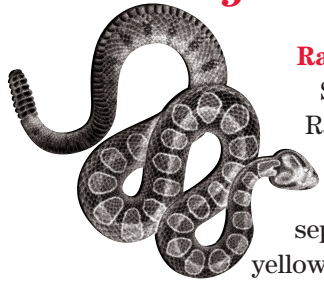
## Historic Ben Overturff Trail

Park in the lower lot and hike Sawpit Canyon road to trail head. **Allow 3 to 5 hours to complete this 7 mile hike with it's 2000 foot elevation gain.**

The Ben Overturff Trail is named for a historical Monrovia who made these canyons and Deer Park a popular recreation area in the early 1900s. The reconstructed trail follows the original path as much as possible through Sawpit, Sycamore and Twin Springs canyons. It winds through approximately 3.5 miles of some of the most beautiful and undisturbed wilderness left in the San Gabriel mountains. The lodge was a popular weekend get-away for city dwellers from about 1911-1945, when Mr. Overturff had to abandon it due to his declining health. The cabin was demolished by the U.S. Forest Service in the 1970 s to end unauthorized use. Public access to the remaning foundation and artifacts has been extremely limited.



## Respect and avoid these members of our community...

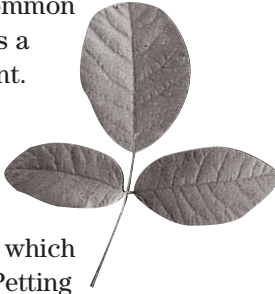


**Rattlesnakes:** The Southern Pacific Rattlesnake is usually grayish brown with dark blotches separated by narrow, yellowish, diamond shaped

lines. Its tail will typically rattle as an alarm. It will not attack, but if disturbed or cornered, it will defend itself.

**Poison Oak:** This very common 3-leaf plant can appear as a vine, bush or spindly plant.

Leaf color can vary from green to yellow and red. The leaves and even the bare stems found in wintertime contain an oil which can irritate human skin. Petting a contaminated dog can transfer the oils to a human. An itchy rash lasts approximately for two weeks.



**Ticks:** This common year-round blood feeding bug is about an 1/8 of an inch or smaller in size with eight legs. Ticks do not fly, jump, or drop from trees. They climb on the tips of vegetation along trails or paths, and wait for an animal or human to brush up against them so they can attach themselves. A very low percentage of ticks may carry Lyme disease.

### Park Rules

- \* No Firearms / Weapons \* No Collecting
- \* No Alcohol \* No Smoking on trails \* No Fires
- \* No Overnight Camping \* No Portable BBQ
- \* Dogs must be on leash. \* No Littering.

**Park Hours:**  
8 a.m. - 5 p.m. Except CLOSED Tuesdays.

**Ben Overtruff Trail**  
Sometimes closed when Police Firing Range is in use.  
(Check for posted signs of special closings)

**Lower Main Gate is Locked at 5 p.m.**



### Monrovia Canyon Park Mission Statement

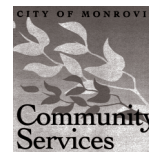
To preserve Monrovia Canyon Park in its natural state in order that the public will have an opportunity to experience the beauty and solitude of nature.

To foster an appreciation, understanding and respect for nature through education.

To provide a safe, attractive and peaceful recreation environment compatible with the natural area.

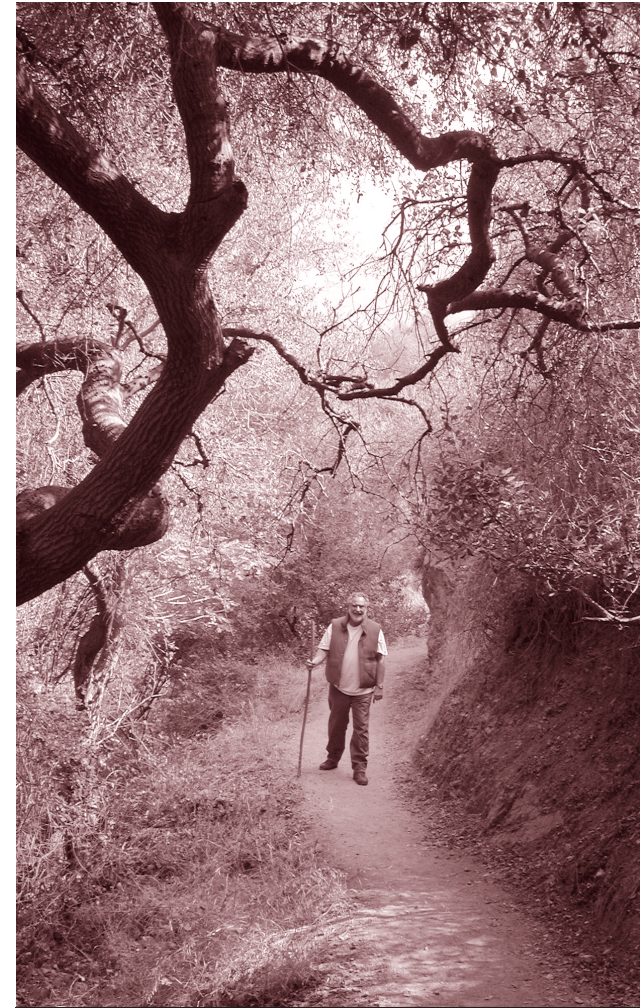


City of Monrovia  
Department of  
Community Services  
119 W. Palm, Monrovia, CA 91016  
Community Services  
Phone 626 • 256 • 8246



# Monrovia Canyon Park Trail Guide

Including the  
Historic Ben Overtruff Trail



1200 N. Canyon Blvd. Monrovia, CA 91016  
Nature Center Phone 626 • 256 • 8282  
[www.monroviacanyonpark.org](http://www.monroviacanyonpark.org)